



## artist bio | exhibition notes

Ant Pearce is an emerging British artist, based in London. He attended **Central Saint Martins School of Art and Design**. Thereafter, he undertook the **MA Visual Arts** course at **Camberwell College of Arts**, graduating with **Merit** in late 2012. His work has been exhibited in **London, the UK, Europe** and the **US**. He is currently represented by **TOAF x Saatchi Art, Gallerie Artvera's**, Genva, Switerland and internationally by **White Court Art** via **Artsy**.

*Reanimation* is an exhibition of select pieces created by Ant Pearce, while living in **Capitola Village, CA**. The series is multi layered; revisiting aspects of the human psyche with an emphasis on the longing to return to the true self, **the repressed subconscious**, named the **Id** by **Freud** and the **Shadow** by **Jung**, and its bound relationship with the **Ego**. Through this personification, the artist explores the significance of **Women** while also reflecting on elements of his own psyche. Inspiration came from the coast line and forest of Capitola, his contemporary and muse; **Diana V Walsworth** and the amazing women of **CrossFit SC Central**, most notably **Annie Sakamoto, Kelly Greco, Helene Bouchard** and **Carmen D'Aluisio**. The artist has combined his signature use of thread, hand-stitched on paper, with fabric designs by **Ana Carolina Cinta**, while using old and new approaches to layering and mark-making with watercolor; introduced to him by London based American artists **Julia Colmenares** and **Rebbeca Allen**. Outside influences came from artists **Christine Ay Tjoe** (White Cube, Bermondsey) and **Anni Albers** (Tate Modern) and writings by authorities in Jungian psychology.

At the highest level there is a sense of **freeing**; of **becoming**; stepping out of the cage; **mirrors** and shifting **reflections** enabled a change in perception — instigating a more harmonious partnering of id and ego and thus facilitating a clearer view into the **darker** (and golden) aspects of **Self**. Here, honesty, contentment, action, growth and intuition, suffering and pain blend together and are able to occur/be experienced at the same time.

Layered within this, through the use of symbols, is a focus on the importance of **Women** within the **System**, as individuals and as a collective, and their implicit connection to the System, as the **creators** and **nurturers** of human life; together with their innate understanding; through **intellect**; **compassion**; **strength** and **intuition**.

These principles have been seamlessly introduced to the artist through these women, who have an intrinsic sense of **wisdom**. This, coupled with connecting with the energy and space in **nature**, allowed him profound access into the **darker** and brighter aspects of **character** — the **duality**, of internal suffering and pain joined with creativity, lightness, strength and warmth; something he had not experienced before.

**When I awoke I realised at once that the [gigantic black] figure was my own shadow on the swirling mists, brought into being by the little light I was carrying. I knew too that this little light was my consciousness, the only light I have. Though infinitely small and fragile in comparison with the powers of darkness, it is still a light, my only light.**

Carl Jung, *Memories, Dreams, Reflections*  
(Zweig and Abrams, 1991, p. xvii).

Special thanks to Saatchi Art Curator **Monty Preston** for her assistance and support with this exhibition.

## References

Zweig, C. and Abrams, J. (eds.) (1991) *Meeting The Shadow*. 1st edn. New York: Penguin Group USA.



**Diana #1 #1 | 2019**

lace + thread hand stitched on paper

*14.8 x 21 cm*



**Homo Deus #1 #4 | 2019**

watercolor + platinum leaf + lace + hair + thread hand stitched on paper

*56 x 76 cm*



**Sapiens II: #2 | 2019**

watercolor + silver leaf + textile + thread hand stitched on paper

41 x 31 cm





**Diana #1 #9 | 2019**

watercolor + 24kt gold + lace + thread hand stitched on paper

*43.5 x 54 cm*



**Diana #1 #6 | 2019**  
 watercolor + platinum leaf + thread hand stitched on paper  
 31 x 41 cm

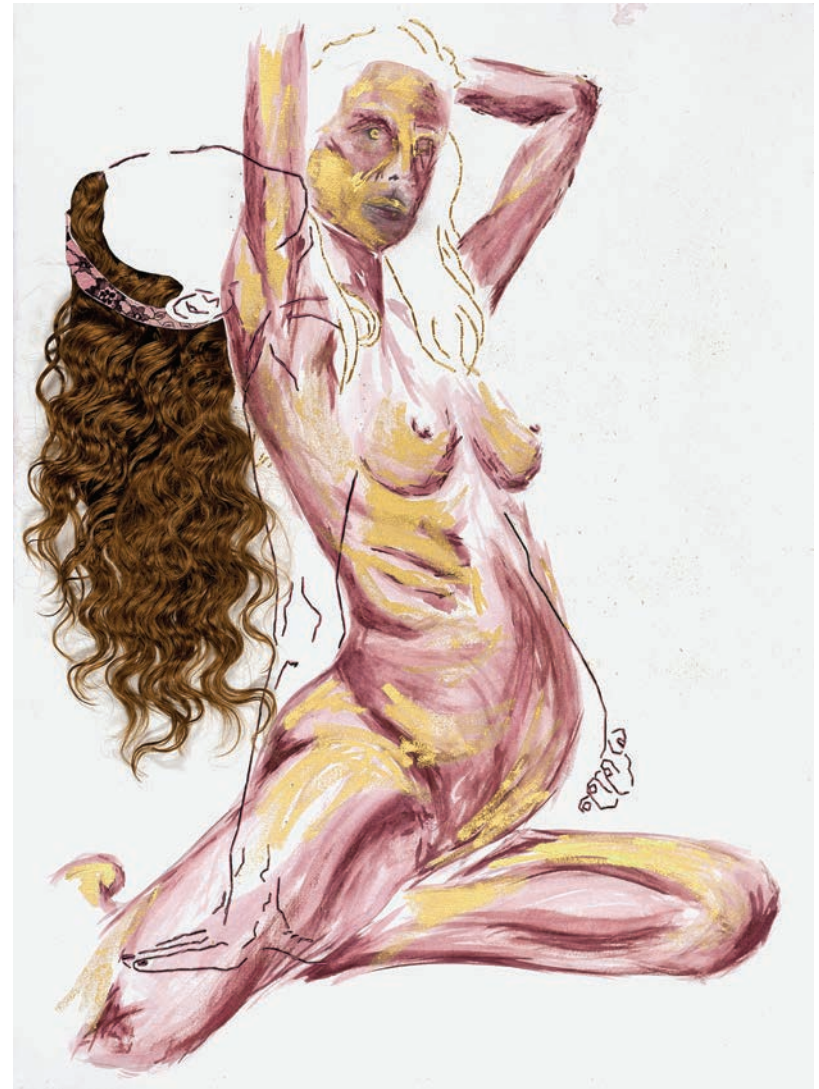


**Diana #1 #7 | 2019**  
 watercolor + platinum leaf + thread hand stitched on paper  
 31 x 41 cm



**Diana #1 #10 | 2019**  
watercolor + 24kt gold + thread hand stitched on paper  
*56 x 76 cm*





**Homo Deus #1 #5 | 2019**

watercolor + 24kt gold leaf + hair + thread hand stitched on paper

*56 x 76 cm*

