

artist statement | introduction

Ant Pearce's practice focuses on the concept that **man is condemned to exist imprisoned**. He explores the **fragility of life**, drawing on **human psychology**. Influenced by **Freud** and the writings and philosophies of **Dostoyevsky**, **Kafka** and **Camus**, his work alludes to the idea that the omnipresent **external authority** is what brings about man's aberrant destructive behaviours.

Select pieces from his latest body of work '**Beyond the Pleasure Principle**', created between August—October 2015, are presented within and combines thread drawings with paint and distorted pixilated imagery. Each work continues to examine the human condition, **dissecting the psychological personality** while encompassing aspects of **narcissism**, **gender** and the **life and death drives**. 'Beyond the Pleasure Principle' is inspired by Freud's work by the same name. The series explore how repetition and repression in human behaviour provides an illusion of being in control by moving through a state of **unpleasure** to a state of **pleasure**. The influences of works by Schiele, Bacon and Kafka's 'Die Verwandlung' ('The Metamorphosis') have emerged unintentionally during the creation process but are clearly visible in the final pieces.

Through a web of cross-references between colour, medium and form, the viewer is positioned before the work in discourse between **order** and **chaos**. Each work brings into visibility the sense of **imprisonment** and **anxiety**, which underlie human existence, and the instinctive desire to return to an inanimate state.

Ant is an emerging British artist, based in London. He attended **Central Saint Martins School of Art and Design**, after which he studied the **MA Visual Arts** course at **Camberwell College of Arts**, graduating with Merit in late 2012. His work continues to be collected and exhibited in **London**, the **UK**, **Europe** and the **US**. He is currently represented by **Artvera's Gallery**, Geneva, Switzerland and internationally via **Artsy** and **White Court Art**.

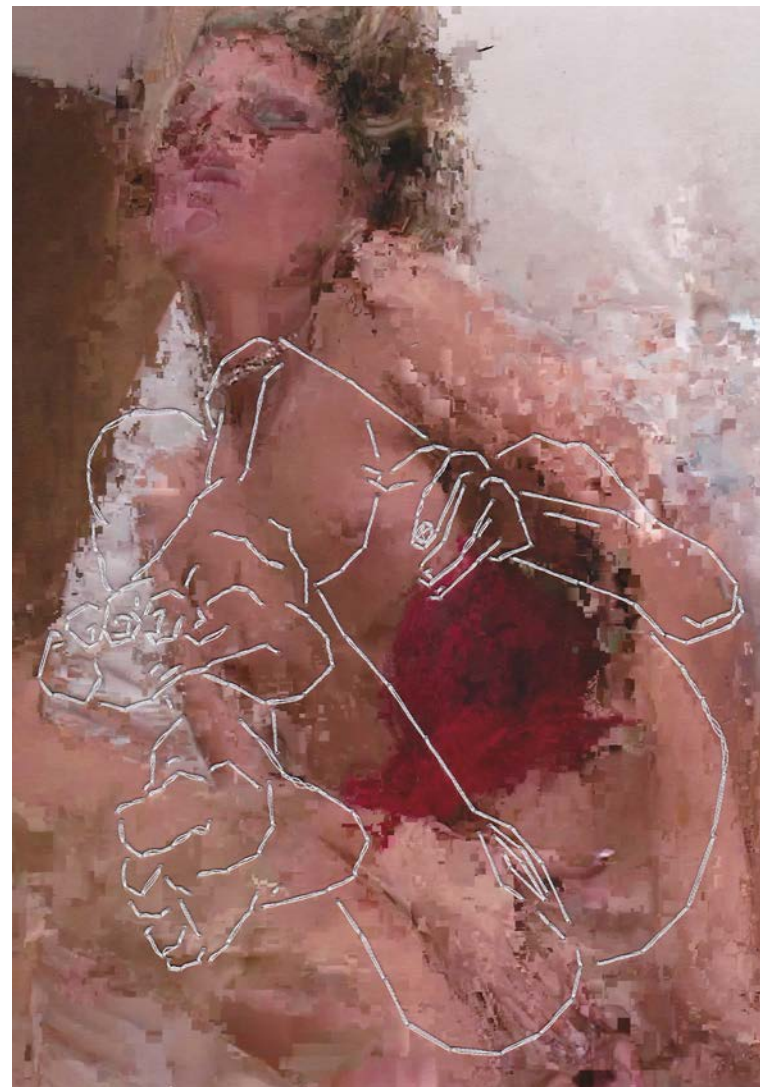


2015-06-29 at 01.16.59 | 2015

cotton thread sewn on photo rag gloss paper

21 x 29.7 cm

600GBP | SOLD



2015-06-29 at 01.16.01 | 2015

cotton thread sewn on photo rag gloss paper

21 x 29.7 cm

600GBP | SOLD

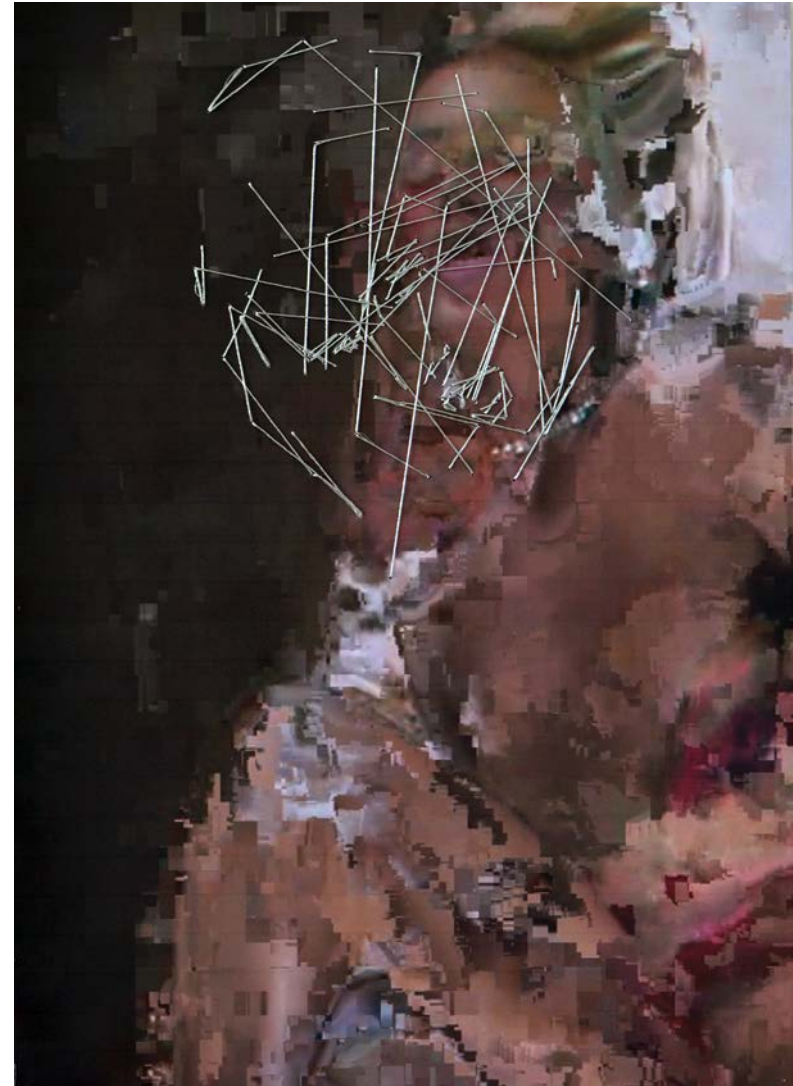


2015-06-29 at 01.13.58 #1 | 2015

fluorescent thread sewn on pixelated image on paper

59.4 x 84.1 cm

900GBP



2015-06-29 at 01.14.47 #2 | 2015

metallic thread sewn on pixelated image on paper

42 x 59.4 cm

750GBP | SOLD

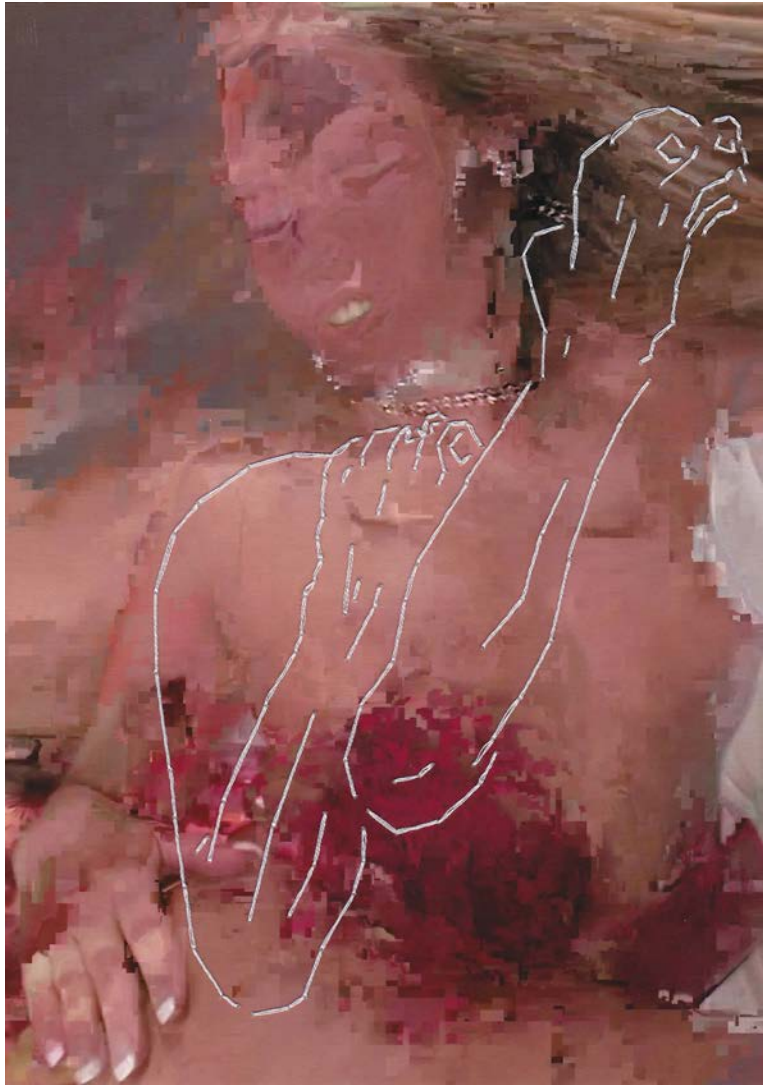


2015-06-29 at 01.22.58 | 2015

cotton thread sewn on photo rag gloss paper

29.7 x 21 cm

600GBP

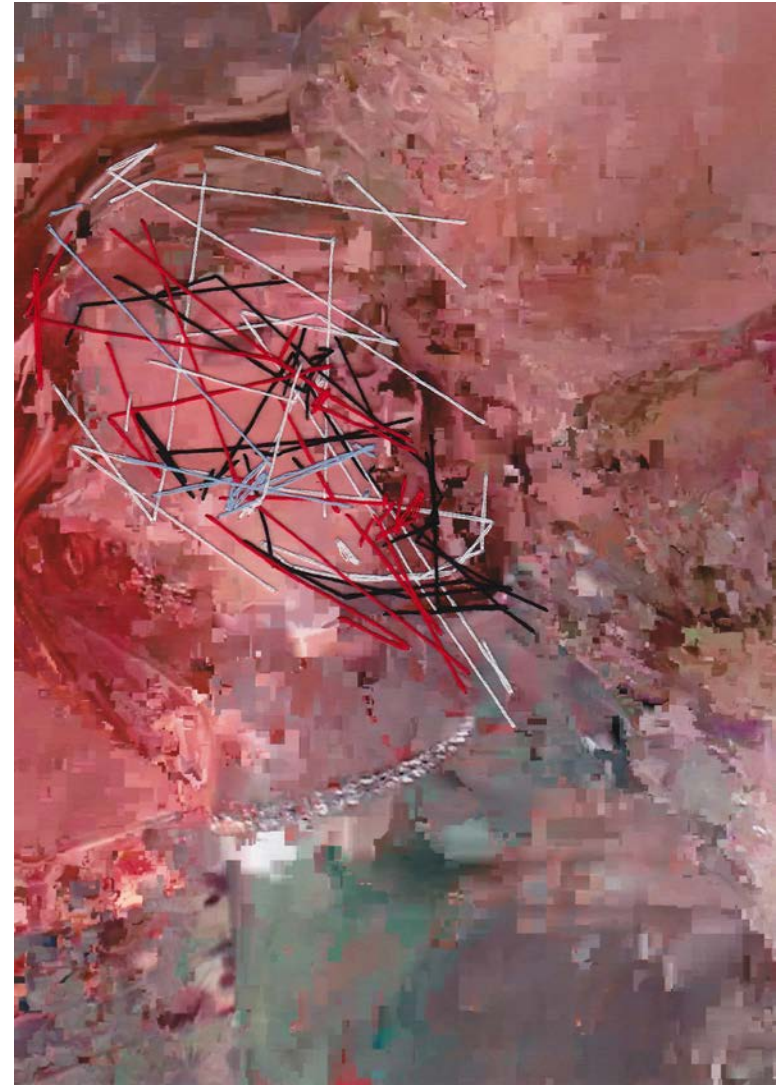


2015-06-29 at 01.11.31 | 2015

cotton thread sewn on photo rag gloss paper

21 x 29.7 cm

600GBP

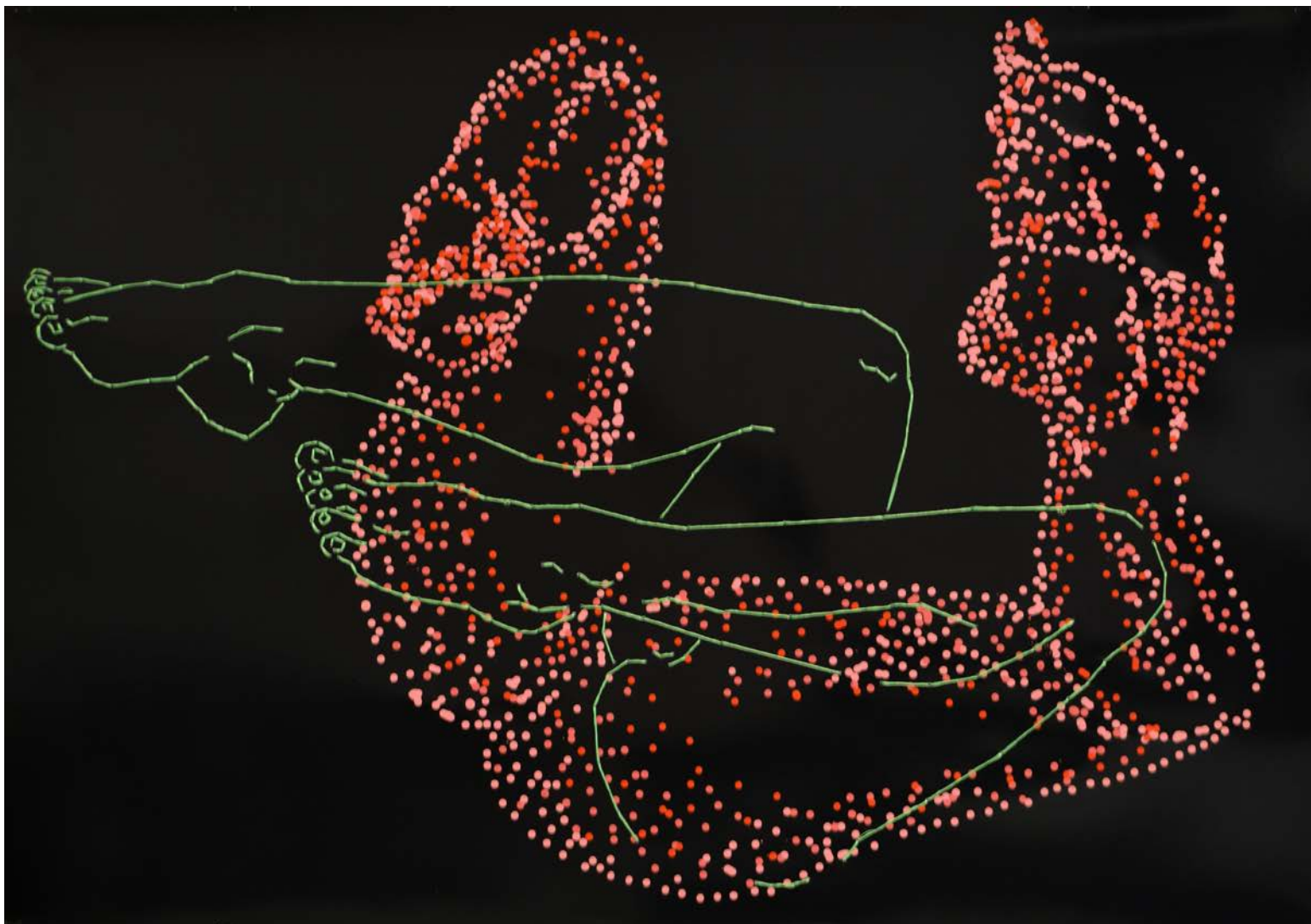


2015-06-29 at 01.32.40 | 2015

cotton thread sewn on photo rag gloss paper

21 x 29.7 cm

600GBP

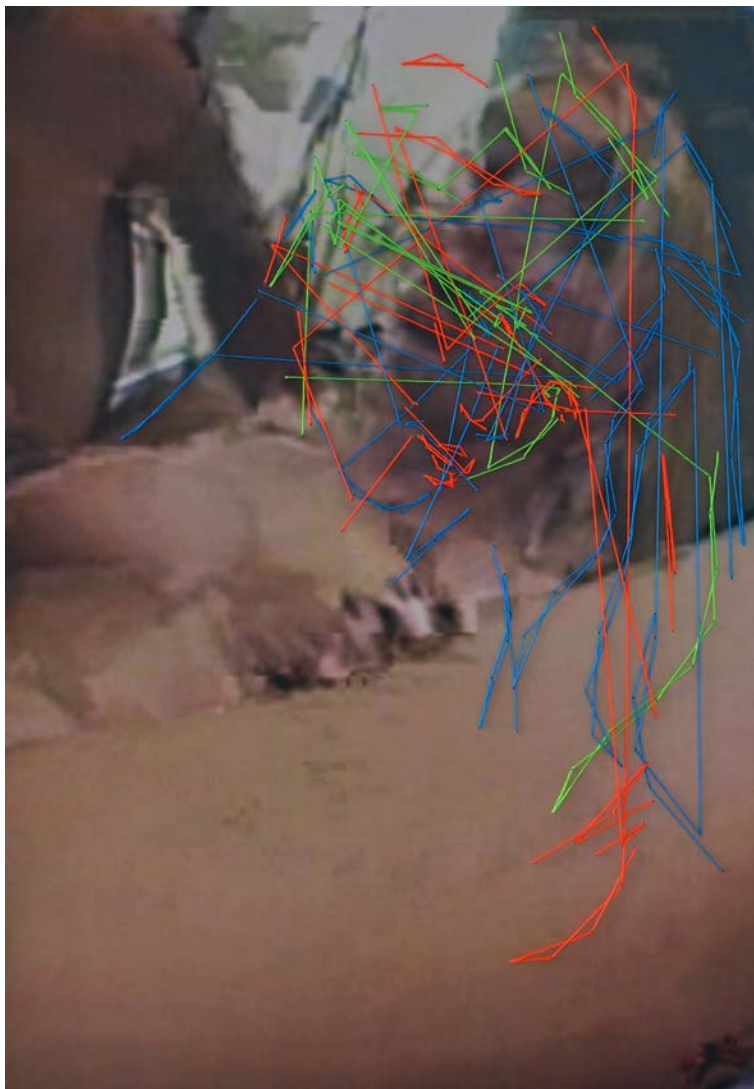


2015-06-16 at 02.10.00 | 2015

emulsion + fluorescent thread sewn on Splendorlux gloss paper

84.1 x 59.4 cm

900GBP



2015-07-01 at 00.59.39 | 2015

fluorescent and cotton thread sewn on pixelated image on paper
59.4 x 84.1 cm

900GBP



2015-07-01 at 01.01.33 | 2015

fluorescent thread sewn on pixelated image on paper
59.4 x 84.1 cm

900GBP | SOLD

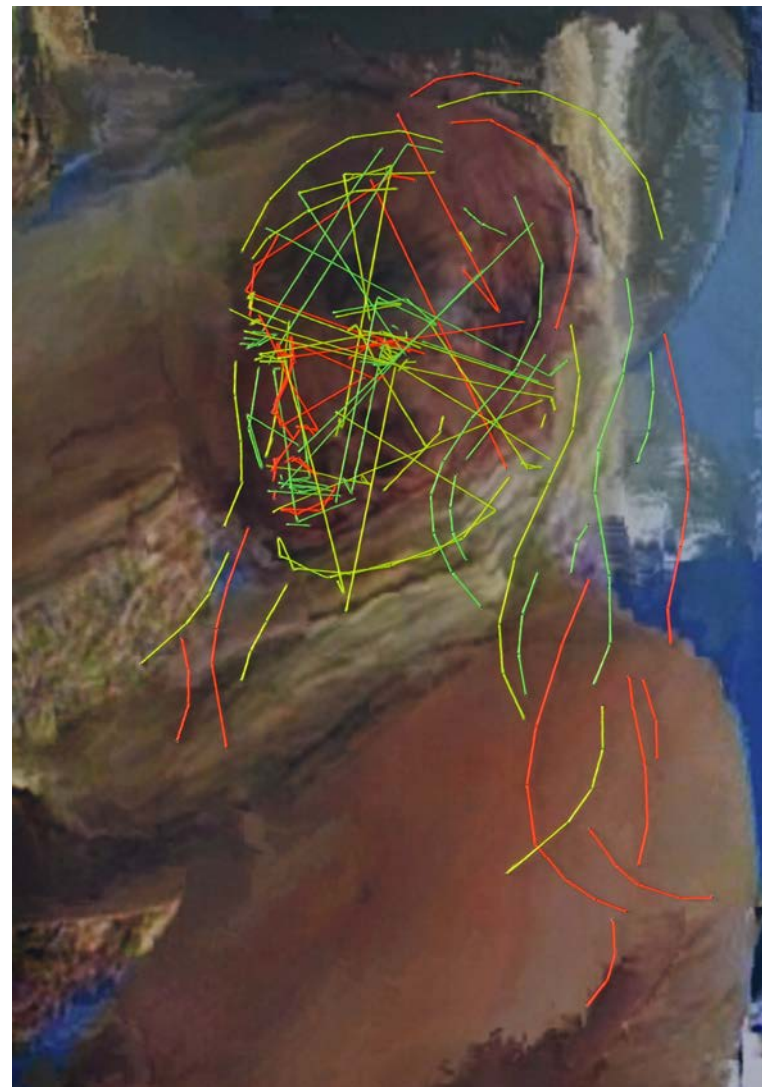


50031|097 #1| 2015

fluorescent thread sewn on pixelated image on canvas paper

21 x 29.7 cm

600GBP

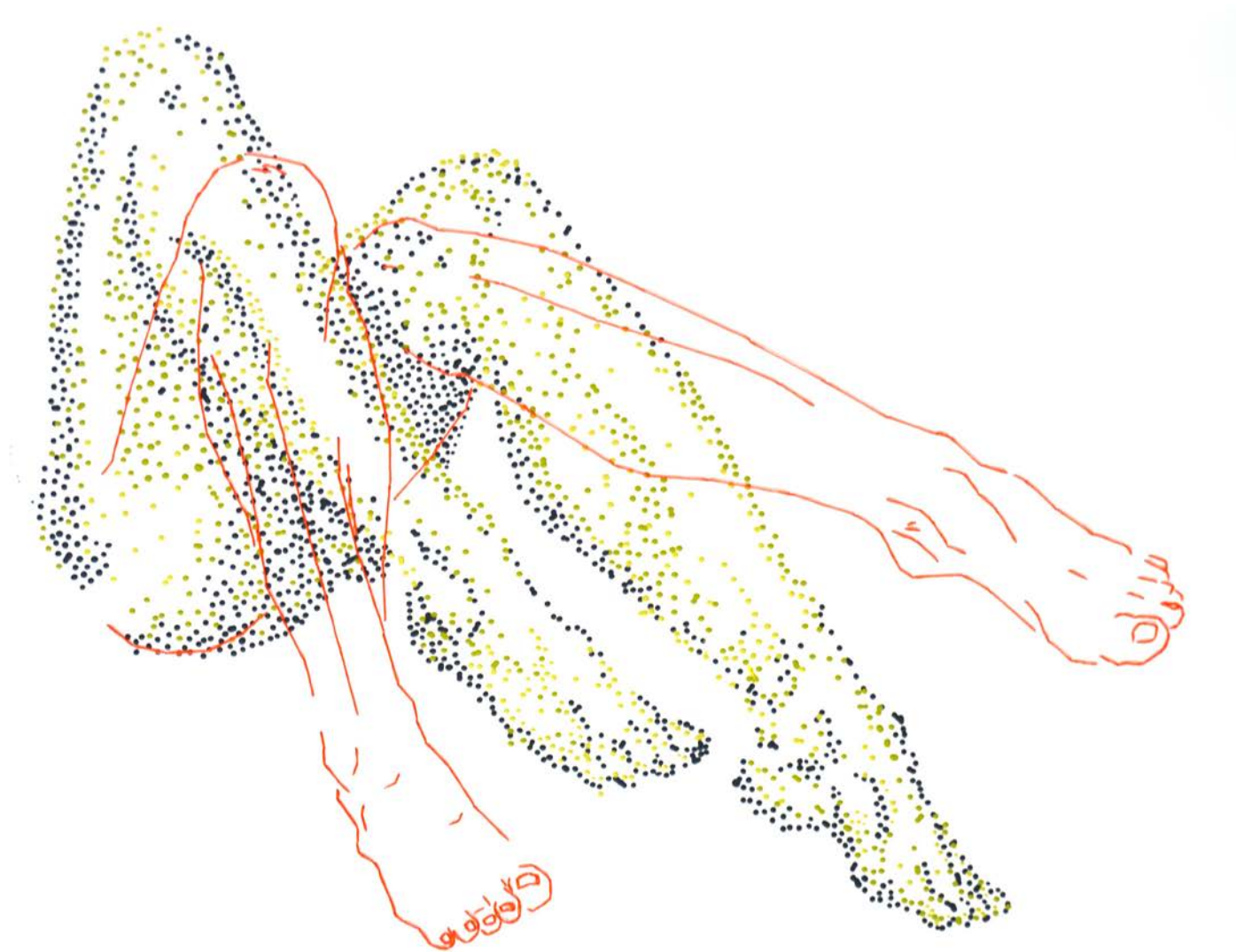


2015-07-01 at 00.50.39| 2015

fluorescent thread sewn on pixelated image on paper

59.4 x 84.1 cm

900GBP



2015-06-16 at 02.08.02 | 2015

emulsion + fluorescent thread sewn on Splendorlux gloss paper

84.1 x 59.4 cm

900GBP

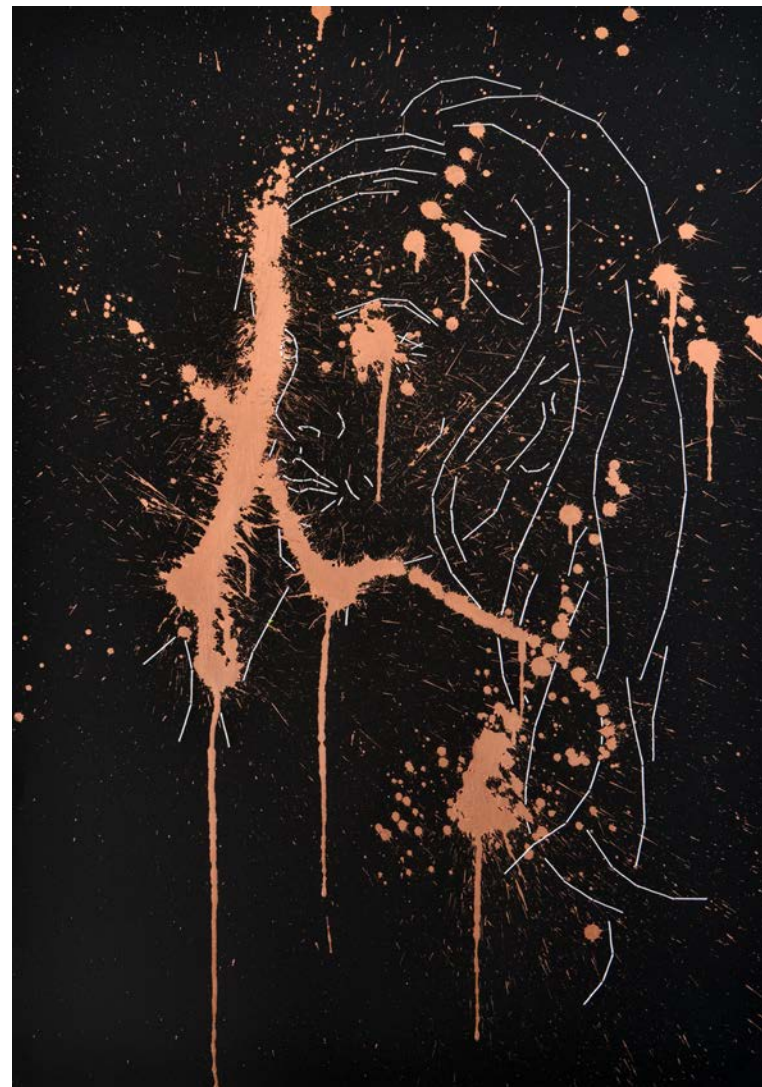


50031|102| 2015

gel + cotton + copper thread sewn on paper

59.4 x 84.1 cm

900GBP

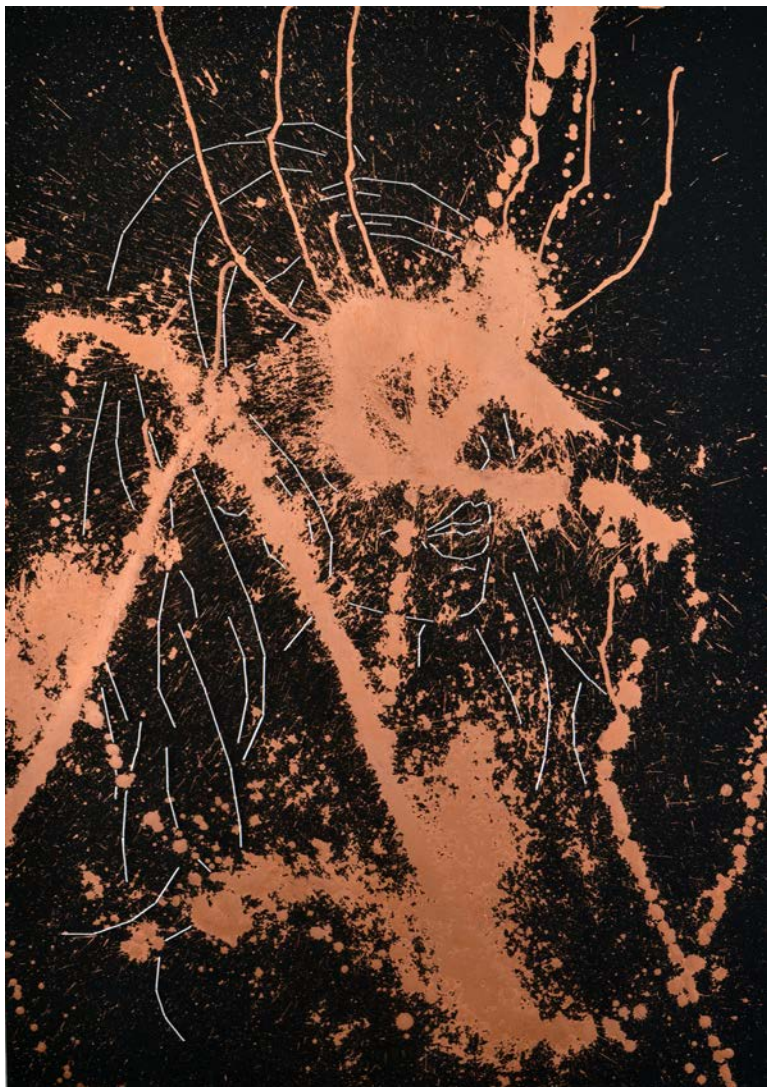


2591|018 #1| 2015

italian copper leaf + cotton thread sewn on paper

59.4 x 84.1 cm

900GBP



2591|018 #2| 2015

italian copper leaf + cotton thread sewn on paper

59.4 x 84.1 cm

900GBP | SOLD



50031|103| 2015

gel + cotton thread sewn on paper

59.4 x 84.1 cm

900GBP



50031|101| 2015

italian copper leaf + fluorescent thread sewn on Splendorlux gloss paper

84.1 x 59.4 cm

900GBP

