



## artist statement | bio

Ant Pearce's practice focuses on the concept that **man is condemned to exist imprisoned**. He explores the **fragility of life**, drawing on **human psychology**. Influenced by **Freud** and the writings and philosophies of **Dostoyevsky**, **Kafka**, **Camus** and most recently **Schopenhauer**, his work alludes to the idea that the omnipresent **external authority** is what brings about man's aberrant destructive behaviours.

Through a web of cross-references between medium and form, the viewer is positioned before each work in discourse between **order** and **chaos**. Thus, bringing into visibility the sense of **imprisonment** and **anxiety**, which underlie human existence, and the instinctive desire to return to an inanimate state.

Ant is an emerging British artist, based in London. He attended **Central Saint Martins School of Art and Design**, after which he studied the **MA Visual Arts** course at **Camberwell College of Arts**, graduating with Merit in late 2012. He has shown in **London**, the **UK**, **Europe** and the **US**. He is currently represented by **Artvera's Gallery**, Geneva, Switzerland and internationally via **Artsy.net** and **White Court Art**.

## introduction

The series within, entitled '**On the Primacy of the Will in Self-Consciousness**', was produced over seven weeks from early February 2016 while undertaking a new course of study in garment construction and design at Fashion Capital ASOS Stitch Academy, London. Operating directly within an institution after three years of working predominately in isolation provided unexpected insight into phenomena of **character**, which unconsciously shaped the direction of the work. The result is a more emotionally charged series, which touches on ideas of the **will** (the heart) and the **intellect** (the head) as discussed by the German philosopher Arthur Schopenhauer (1788—1860) in his central work 'The World as Will and Representation'. (Schopenhauer, 2015, p. 491)

The will, as the thing in itself, constitutes the inner, true and indestructible nature of man; [...] The intellect is the secondary phenomenal; the organism the primary phenomenon, that is, the immediate manifestation of the will; the will is metaphysical, the intellect physical; —the intellect, like its objects, is merely phenomenal appearance; the will alone is the thing in itself.

The relationship between the two is perhaps best likened to 'the strong blind man who carries on his shoulders the lame man who can see.' (Schopenhauer, 2015, p. 496)

These works were created through **experimental drawing**; combining the artist's signature thread drawing with ink on paper, paint on cotton and woodcut combined with ink and gold leaf. Although based predominantly on only two images, one of **Brigitte Bardot** and one of **Kate Moss**, the result was twenty-one genuinely unique pieces, a selection of which were featured in Issue 11 of **After Nyne** magazine. Two additional pieces of Brigitte Bardot were created in early October 2016, just before exhibiting at **The Other Art Fair**, enabling the artist to reconnect with the series. These more recent works explore ideas of **character through time** and can be found on page 4 of this book.



**Brigitte #1 #2b | 2016**  
emulsion + cotton sewn on cotton, on paper  
*54.3 x 73.5 cm*  
-----  
800GBP



**Brigitte #2 #2 | 2016**  
 emulsion + cotton sewn on cotton, on paper  
*59.4 x 84.1 cm*  
 -----  
 900GBP



**Brigitte #2 #1 | 2016**  
 ink + cotton sewn on paper  
*59.4 x 84.1 cm*  
 -----  
 900GBP

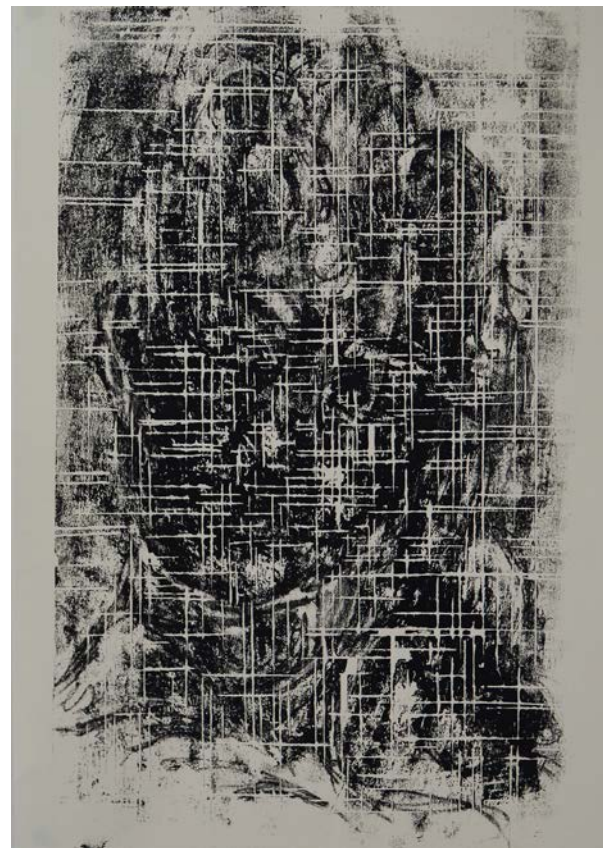
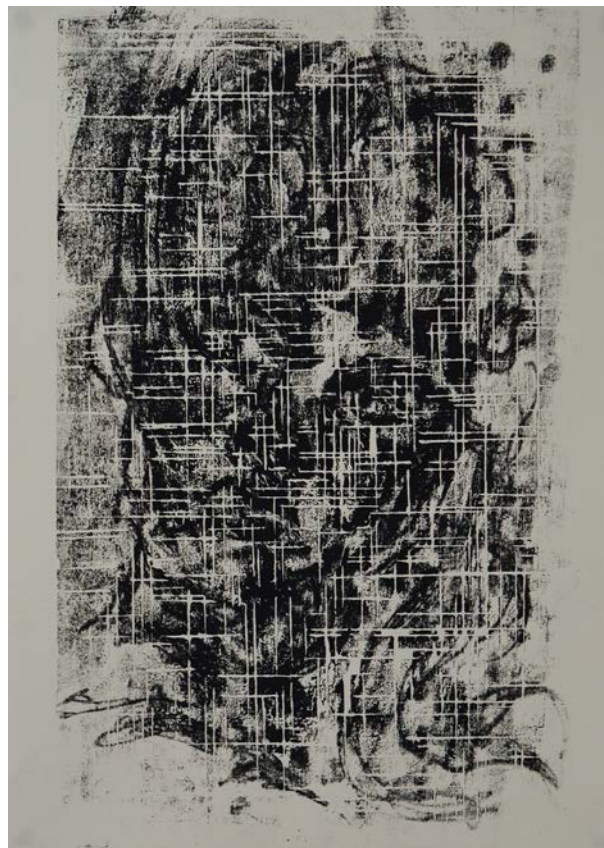


**Brigitte #1 #1 | 2016**

emulsion + cotton sewn on cotton, on paper

*59.4 x 84.1 cm*

-----  
900GBP



**Brigitte #1 #5a, Brigitte #1 #5b, Brigitte #1 #5c | 2016**

ink on paper  
42 x 58.8 cm (each)

-----  
700GBP (each)



**Brigitte #1 #4 | 2016**

ink + cotton sewn on paper

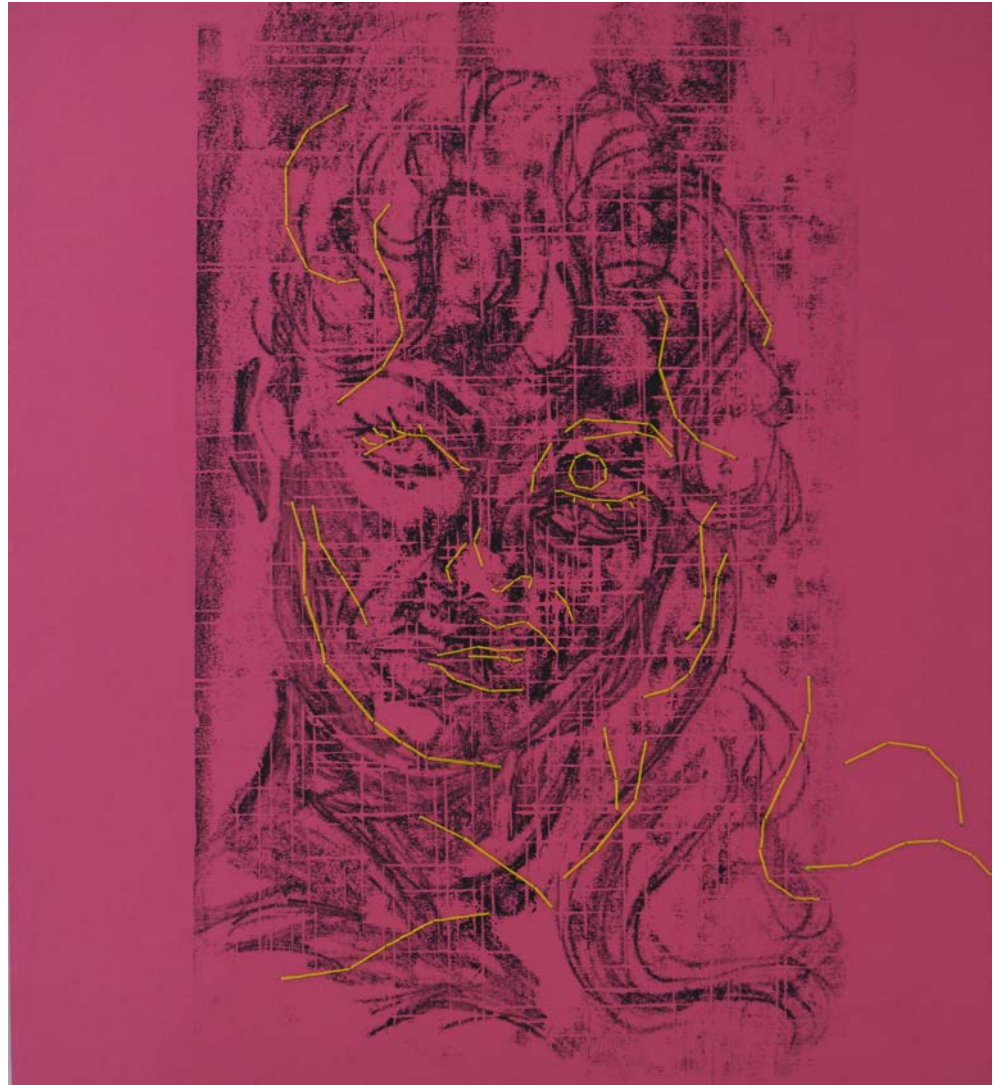
*43.9 x 59.4 cm*

-----

750GBP



**Brigitte #1 #3a | 2016**  
ink + cotton sewn on paper  
*63.8 x 59.4 cm*  
-----  
800GBP



**Brigitte #1 #3b | 2016**

ink + cotton sewn on paper

*53.8 x 59.4 cm*

-----

800GBP



**Brigitte #1 #3 | 2016**

ink + gold leaf + cotton sewn on plywood cut

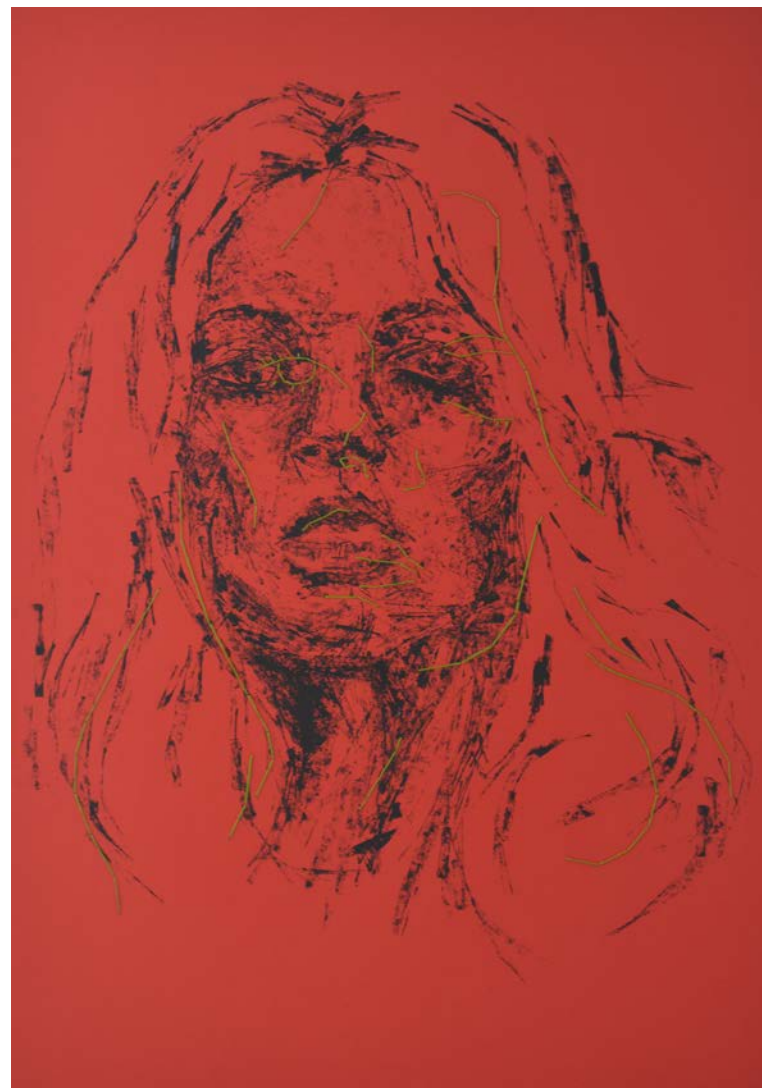
*35.4 x 60.6 x 0.5 cm*

-----

750GBP



**Kate #7 #6 | 2016**  
emulsion + cotton sewn on cotton, on paper  
59.4 x 84.1 cm  
-----  
900GBP



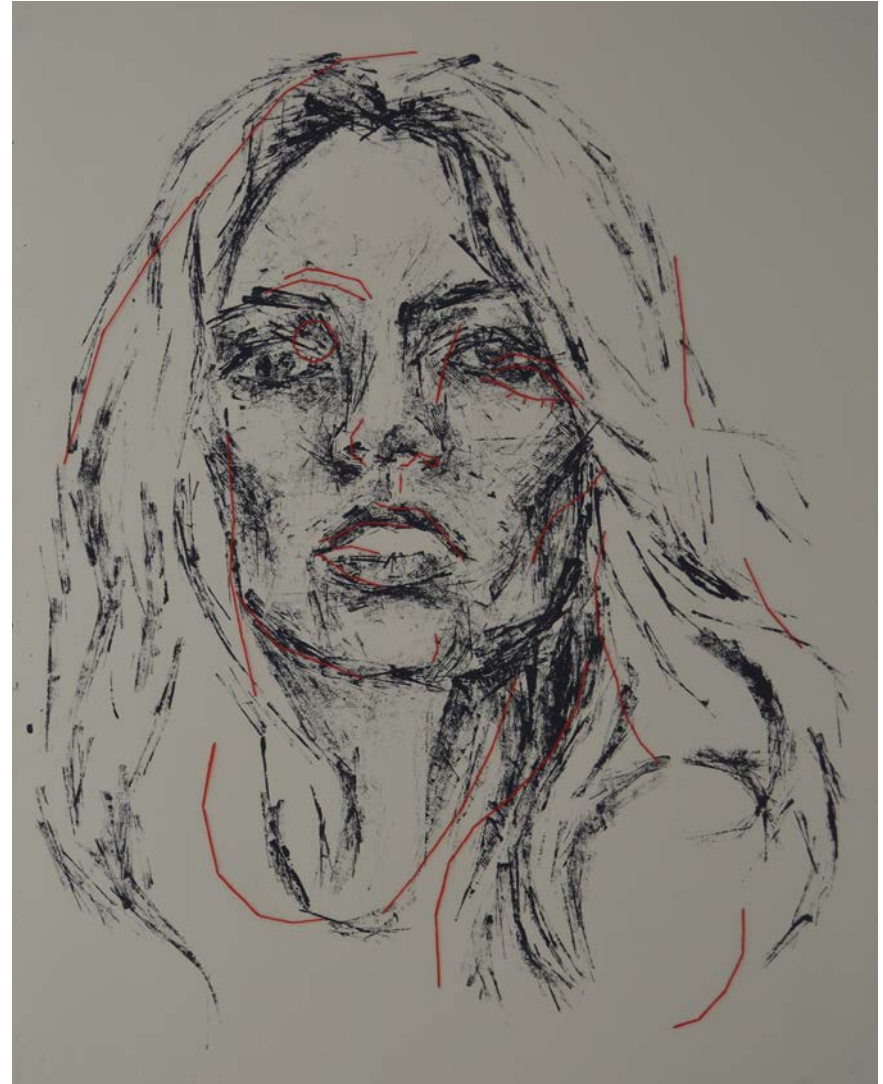
**Kate #7 #1 | 2016**

ink + cotton sewn on cotton, on paper

*59.4 x 84.1 cm*

-----

900GBP



**Kate #7 #2 | 2016**

ink + cotton sewn on cotton, on paper

59.4 x 74.1 cm

-----

850GBP

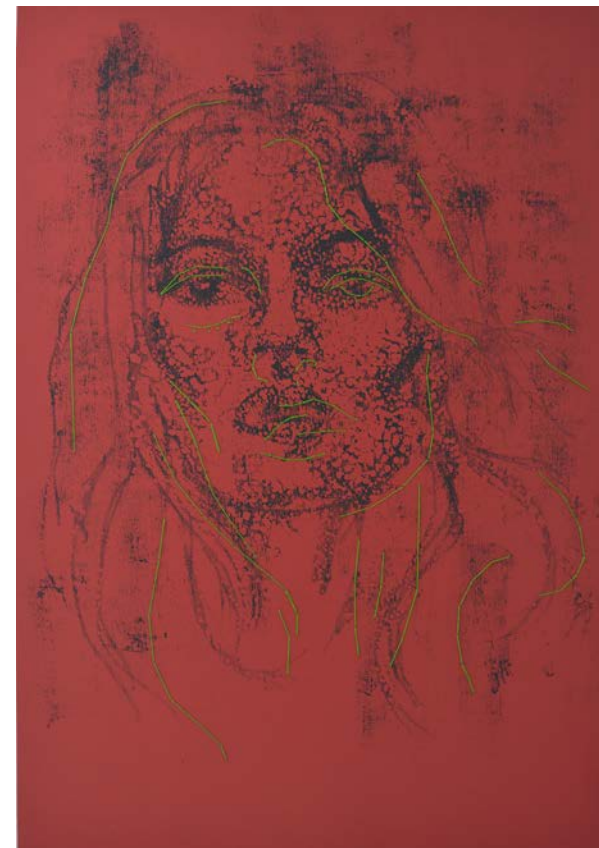
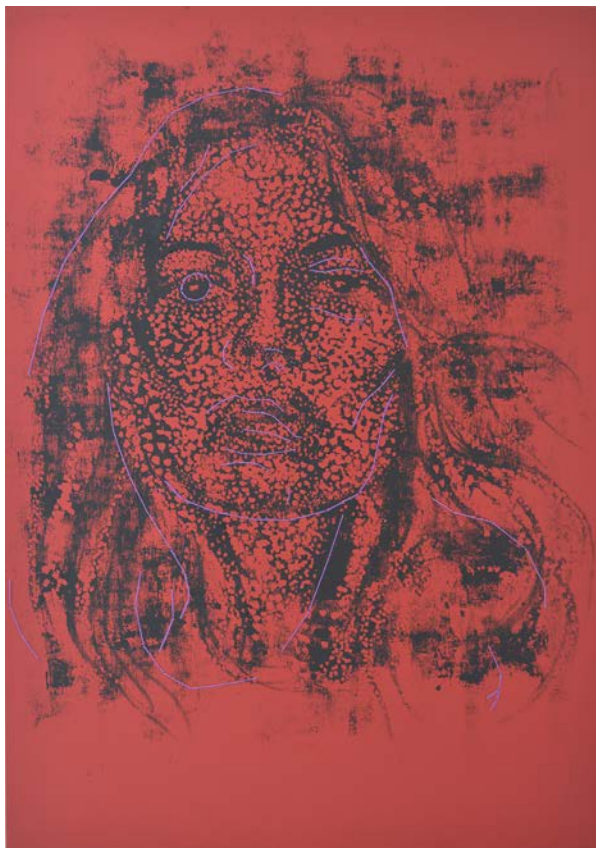


**Kate #7 #3 | 2016**

ink + gold leaf + cotton sewn on plywood cut

60.6 x 77.6 x 0.9 cm

-----  
1,000GBP



**Kate #7 #3b, Kate #7 #3c, Kate #7 #3a | 2016**

ink + cotton sewn on paper

*59.4 x 84.1 cm (each)*

-----  
900GBP (each)



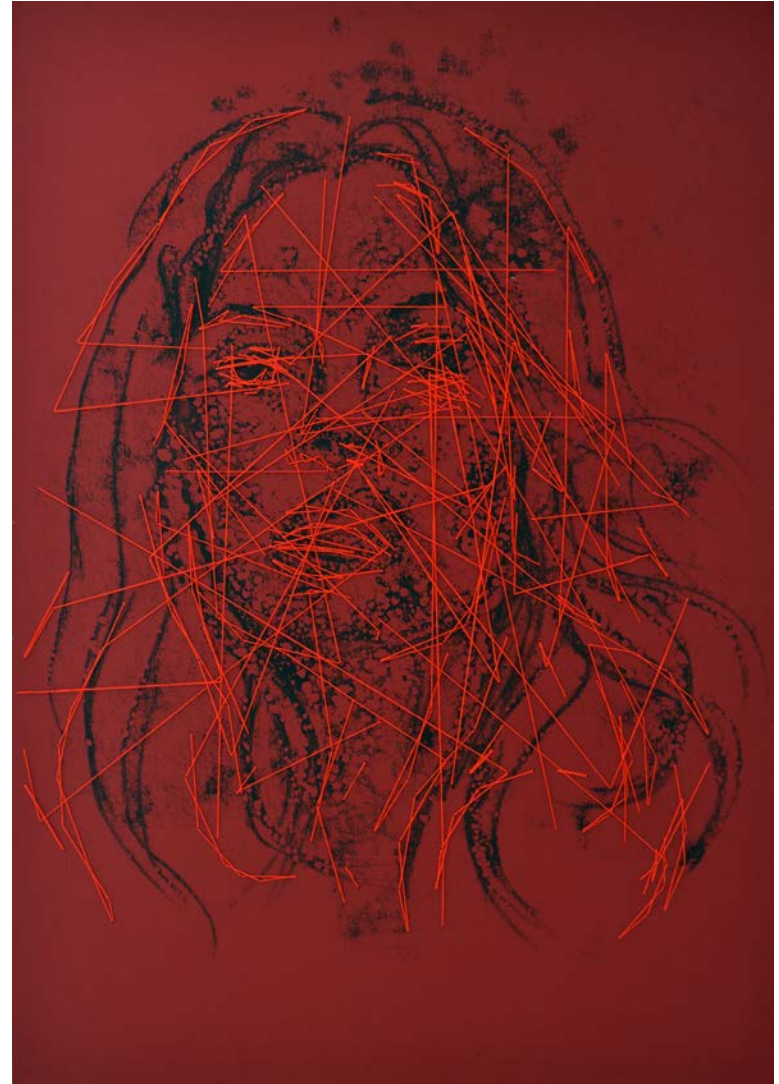
**Kate #7 #4b | 2016**

emulsion + cotton sewn on cotton, on paper

53 x 79.2 cm

-----

800GBP



**Kate #7 #3d | 2016**  
ink + cotton sewn on paper  
*59.4 x 84.1 cm*  
-----  
900GBP



**Kate #7 #5 | 2016**

emulsion + cotton sewn on cotton, on paper

59.4 x 84.1 cm

-----

900GBP

